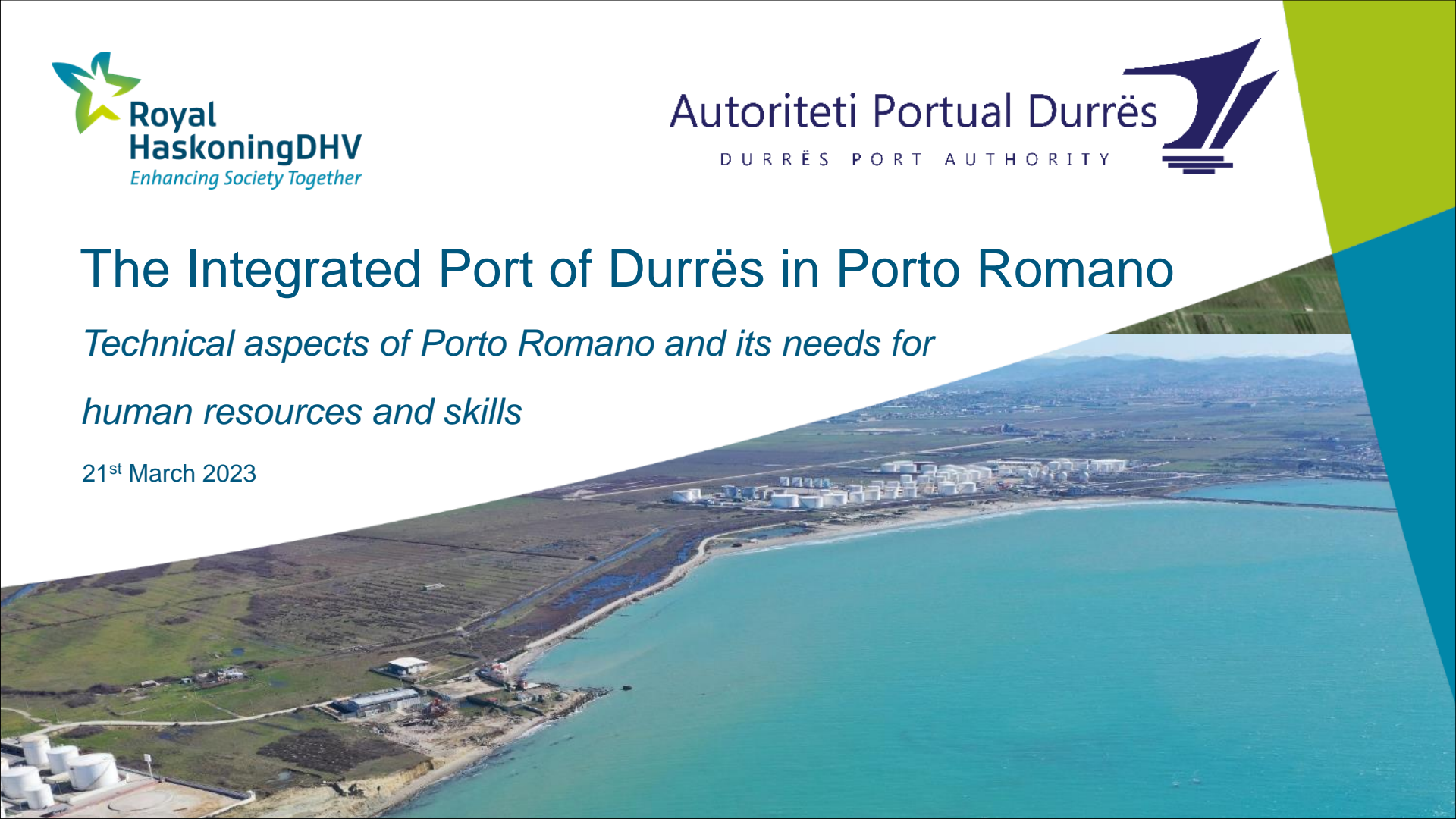




The Integrated Port of Durrës in Porto Romano

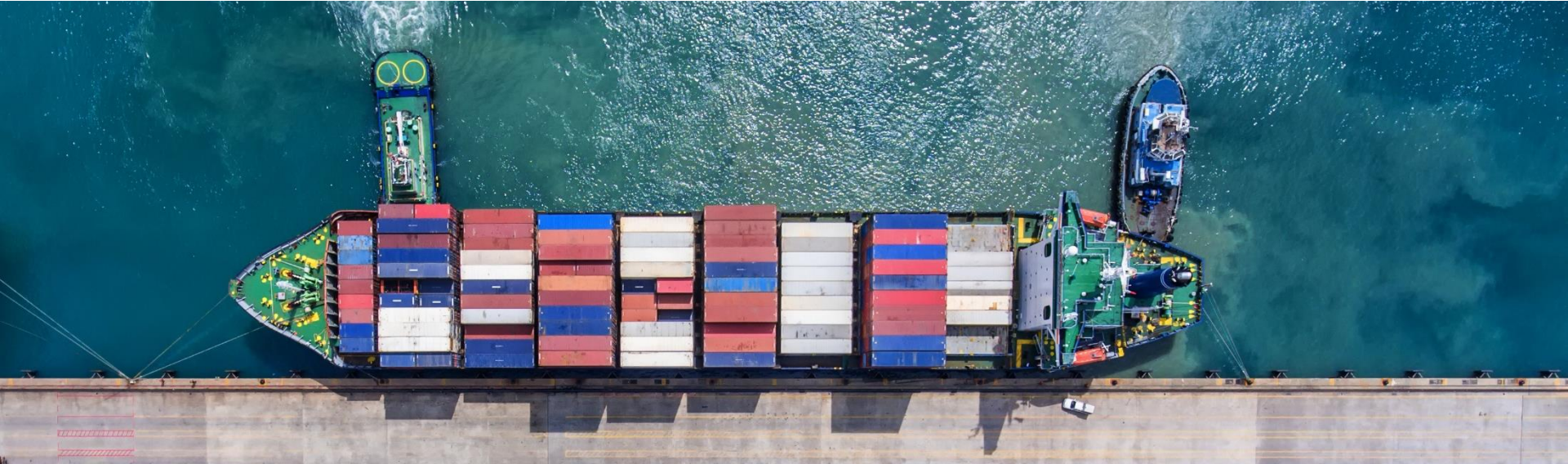
*Technical aspects of Porto Romano and its needs for
human resources and skills*

21st March 2023

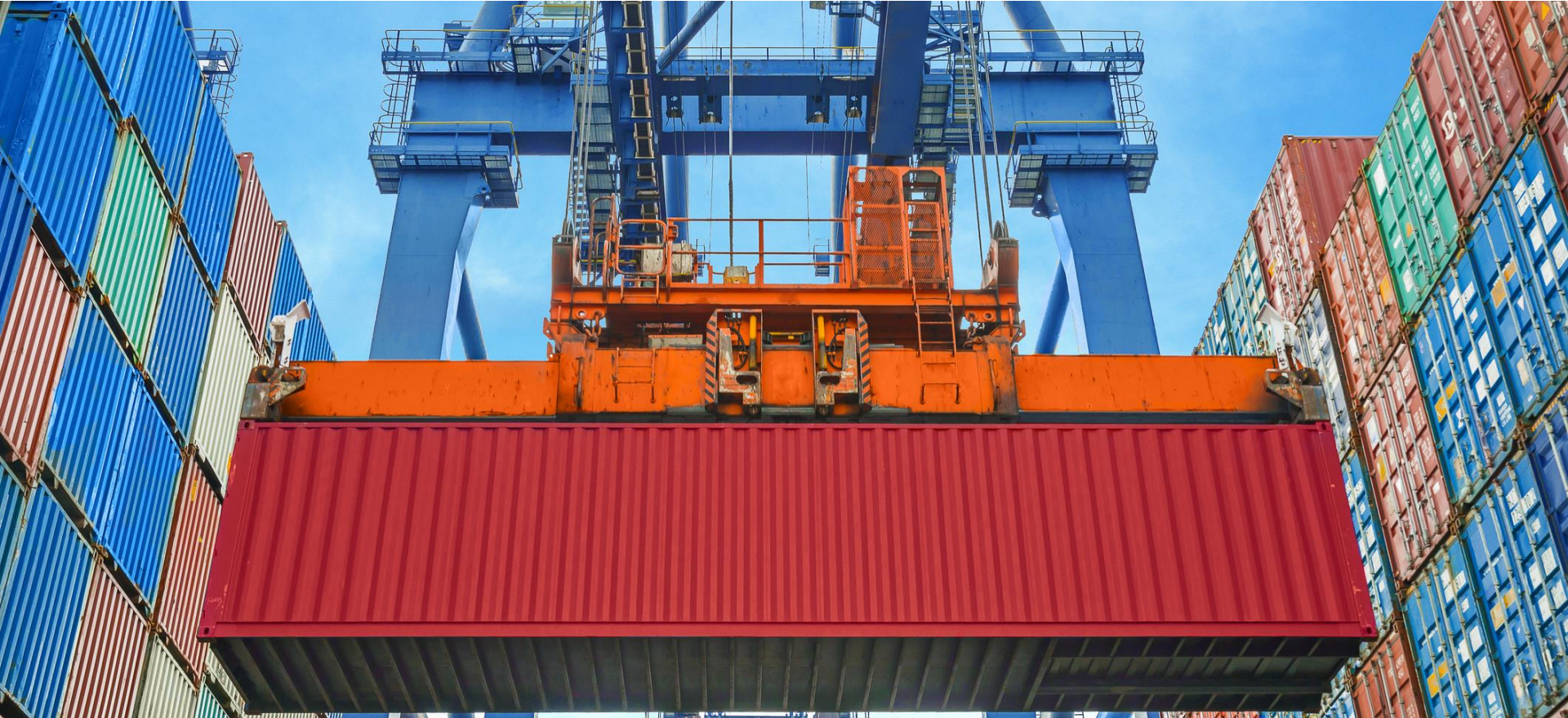


Agenda

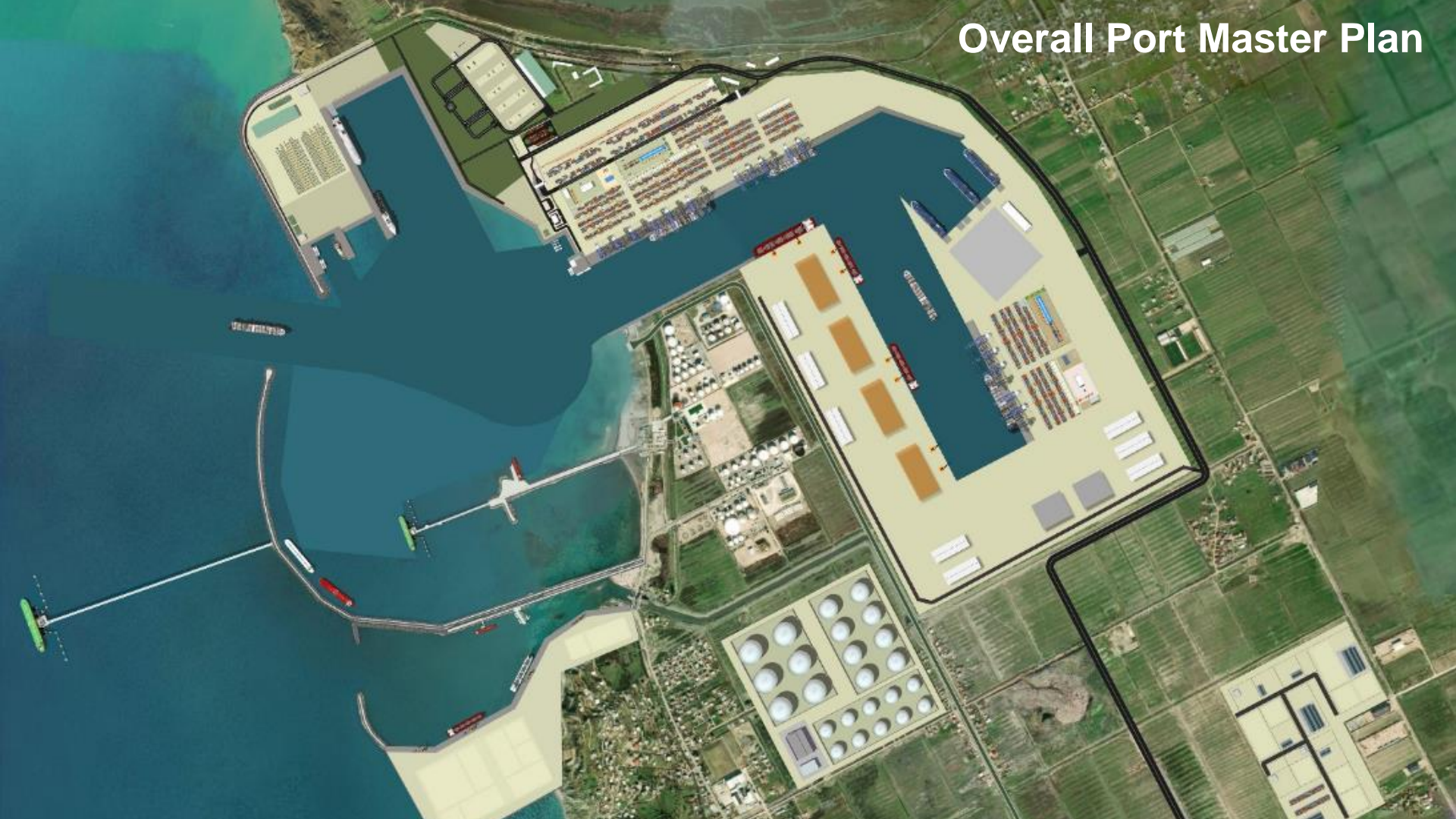
- Part A – Short introduction to the project
- Part B – Main technical aspects
- Part C – Human resources and skills required



Part A – Short introduction to the Project



Overall Port Master Plan



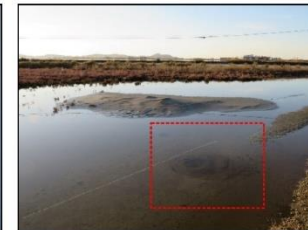
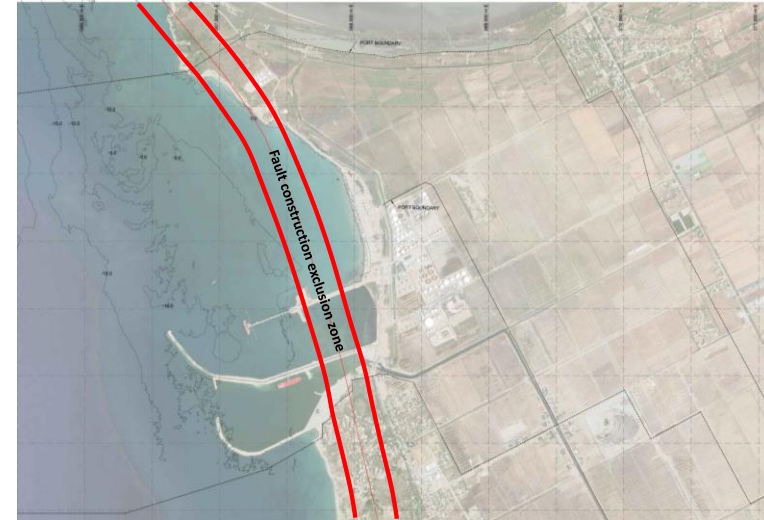
Part B – Main technical aspects



1. Key technical issues
2. Major components

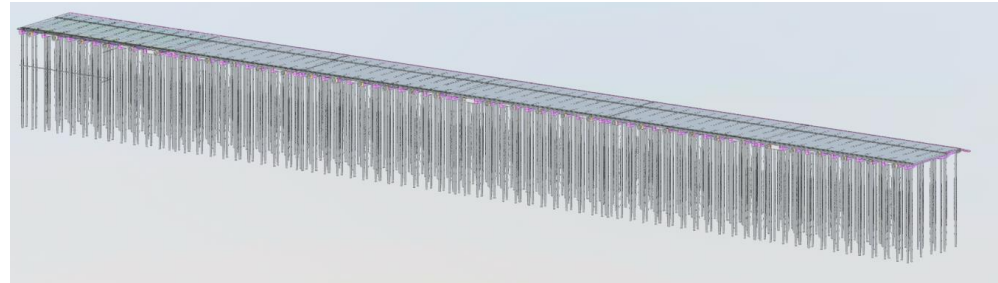
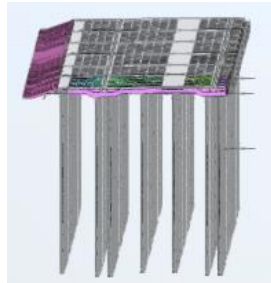
Key technical issues

- Geotechnical:
 - Near fault location
 - Seismicity
 - Subsoil
 - Mud / silt / sand stone (west of fault line)
 - Sandy silt / silty sand (east of fault line)
 - Slope stability
 - Potential for liquefaction



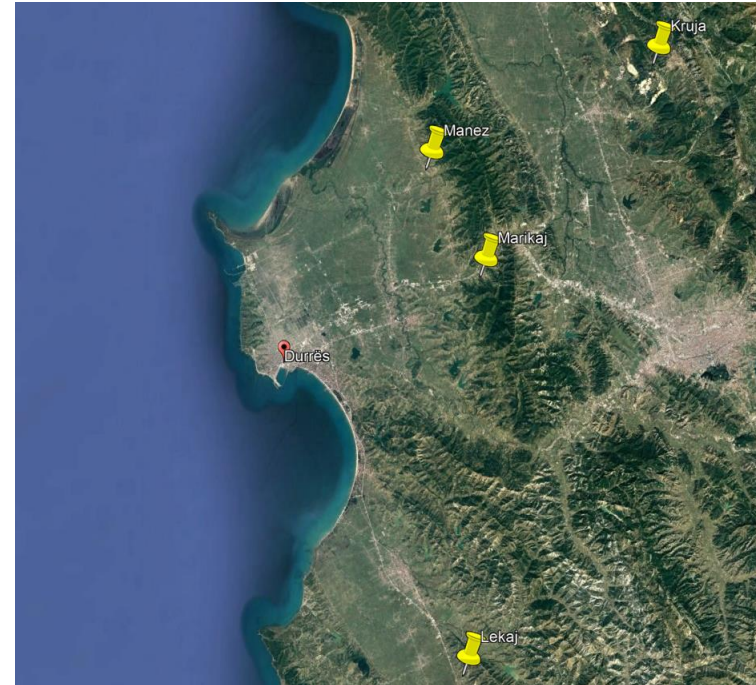
Key technical issues

- Quay structures
 - Length of piles
 - Slope stability
 - Construction methodology



Key technical issues

- Dredging and disposal:
 - Dredging method
 - Disposal method & location(s)
- Fill & surcharge material:
 - Reuse of dredged material
 - Sources



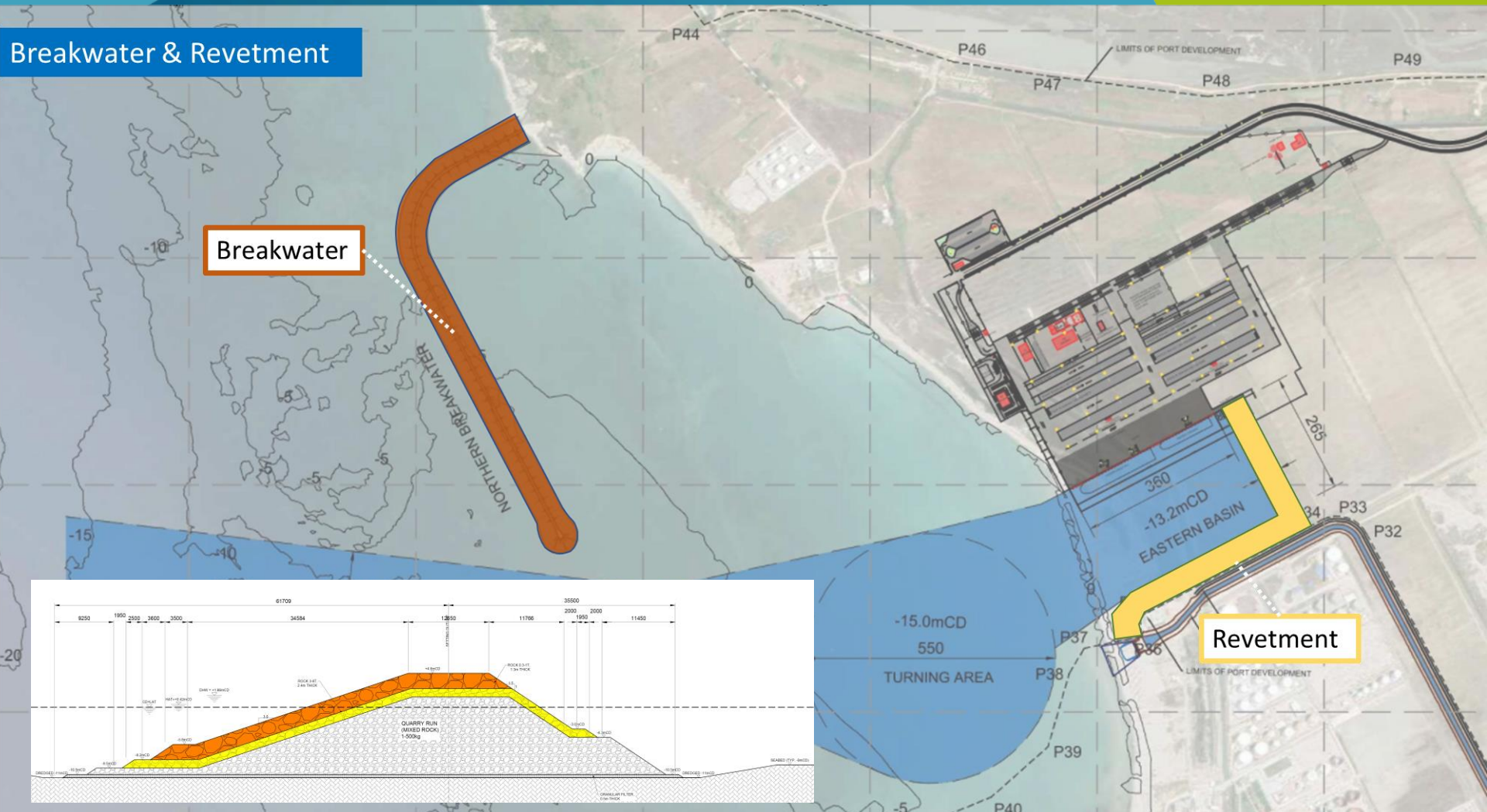
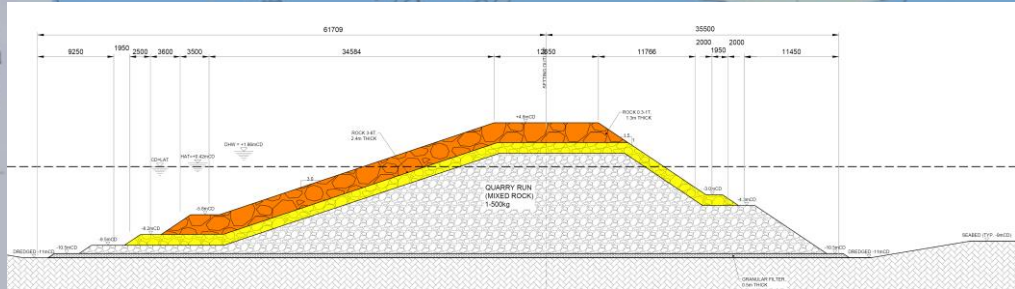
Major components

- Breakwater & Revetments
- Dredging, disposal & fill
- Quay wall

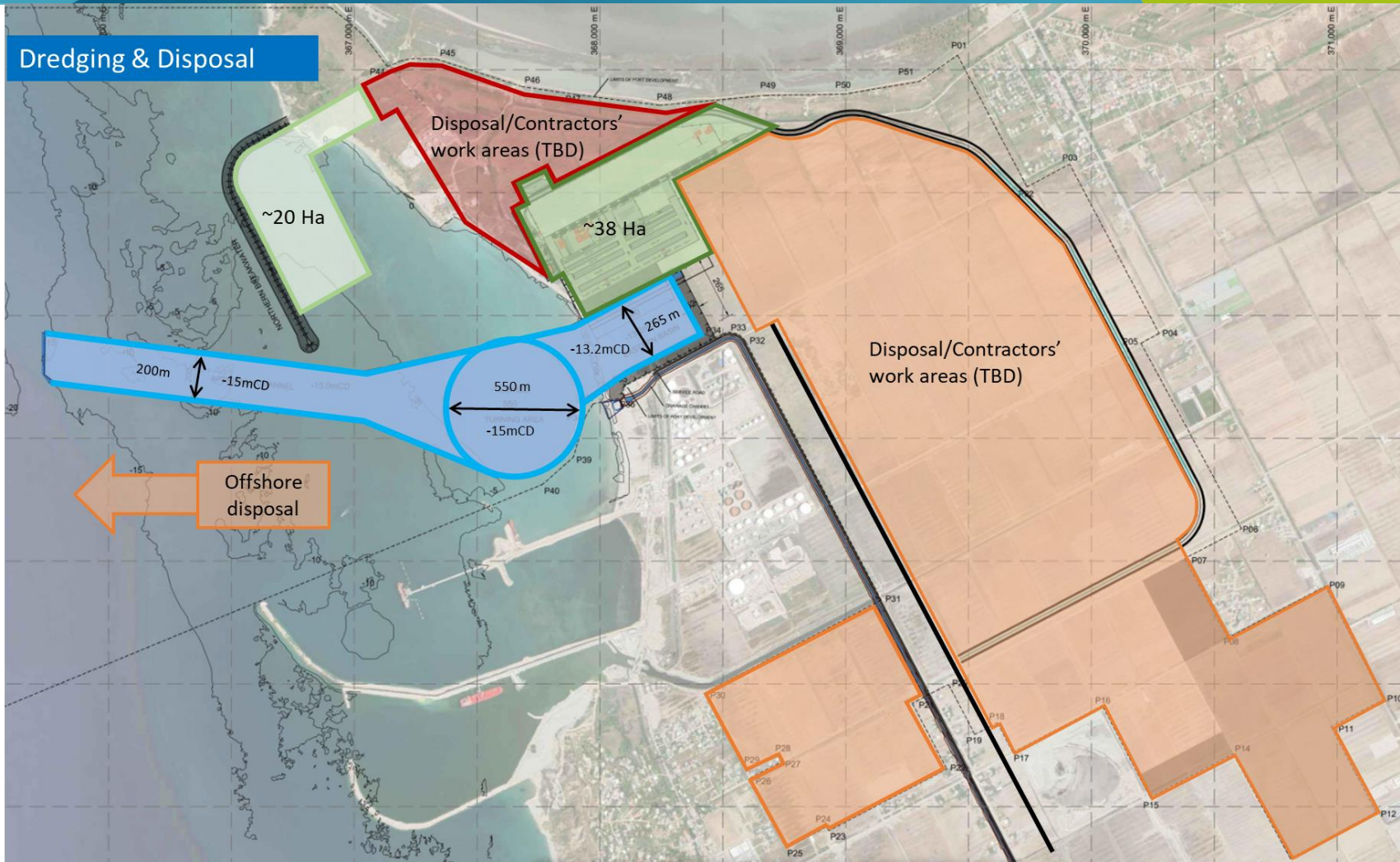
Breakwater & Revetment

Breakwater

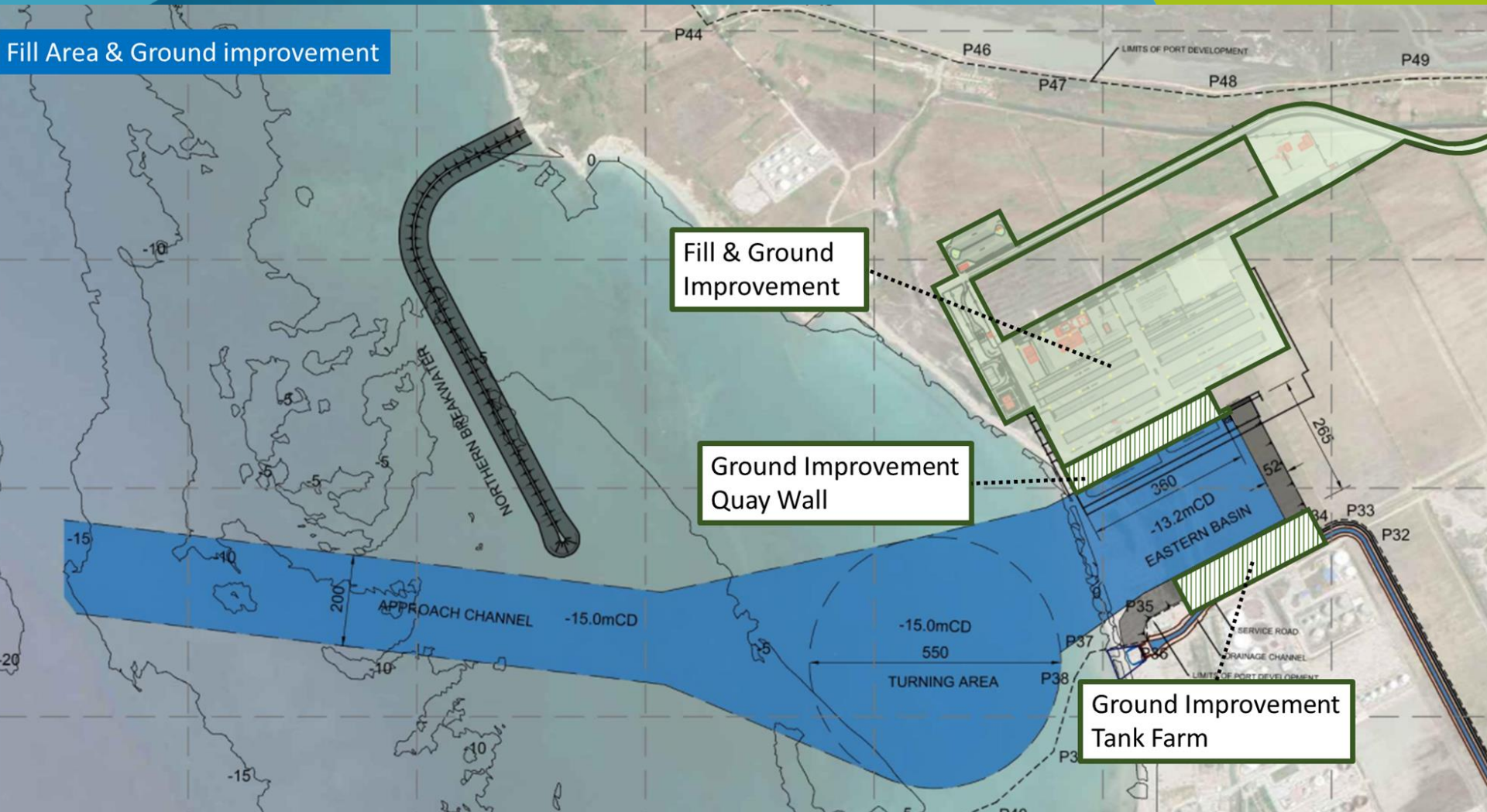
Revetment



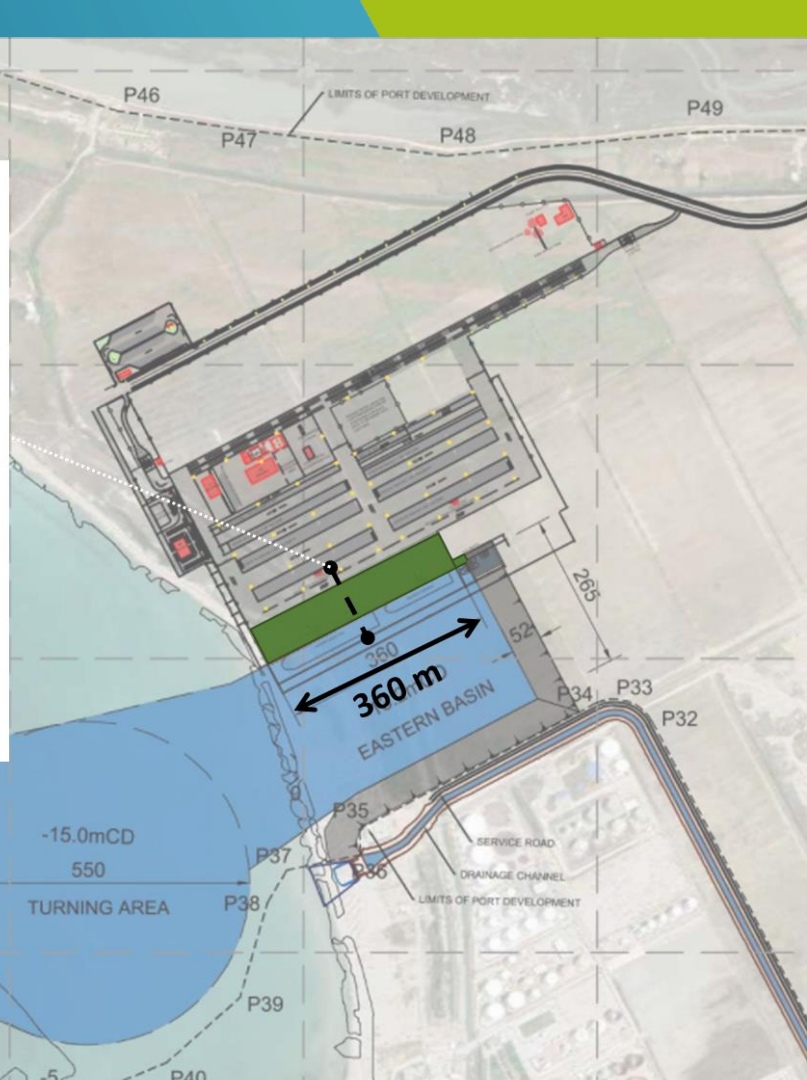
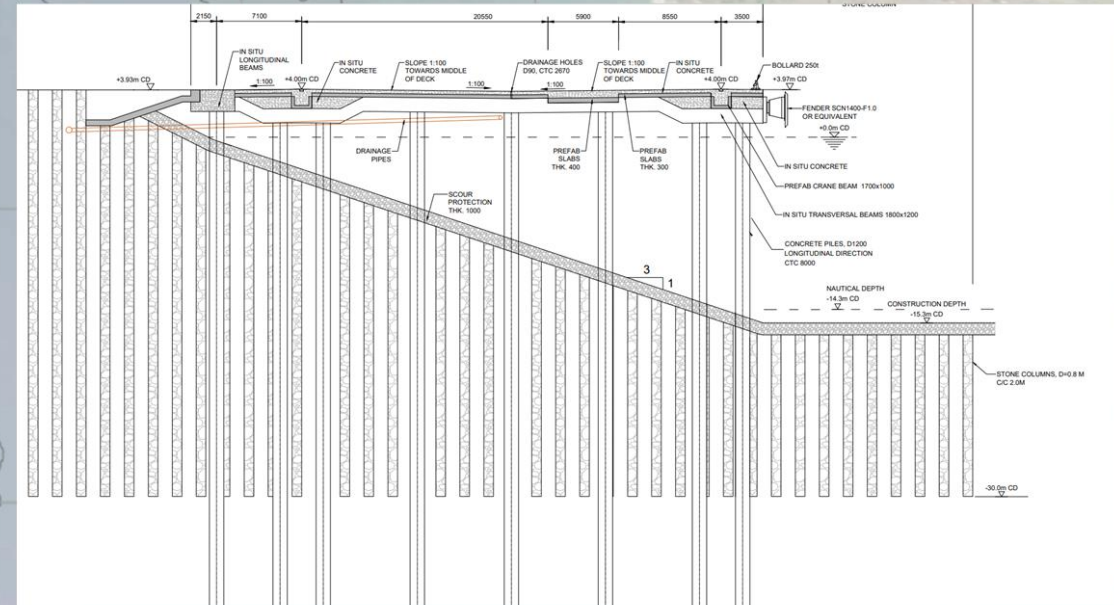
Dredging & Disposal



Fill Area & Ground improvement



Quay structure



...but after construction also operations & realising opportunities



Part C – Human resources and skills required



Start of a new 'ecosystem' - human resources

- Not only construction, but also operation and maintenance
 - Not only the port / port related, but the full logistic chain
 - Not only short term, but also mid & long term:
 - training, curriculum development (automisation)
- => sustainable growth & expansion
- Not only reactive but also pro-active



Start of a new 'ecosystem' - human resources



Support the storage and export potential of Albania's hydrocarbon industry (major investments planned by ENI & Shell)



Expanded autonomous and intermodal naval facilities to cater for future ambitions of national and allied navies



Dry ports in the Western Balkans to enhance transit trade volumes



Logistic park & economic zone at Port of Durrës - Porto Romano to support port functions and added value logistics

Thank you for your kind attention

